



**It's a land for
the Legends,
Are you the
next one to
buy?**

99 Villa Plots | 11 Acre Gated Community
Starts from **208 Sq. Yard Plot | 1 Acre Amenities area**
... and many more.

Marketed by

 **square select**
www.squareselect.in

99 Villa
Plots

11 Acres
Gated Community

208 Starts from
Sq Yard

20 Lacs/- Starts from
per Unit

For Peace of Mind...

Situated on the edge of the beautiful Lake of Village and in the center of the upcoming golden triangle of Shankarpally – Mominpet – Sadasivpet road. Medhini Lake view is spread over 11 Acres in a gated community.





For Real Happiness...

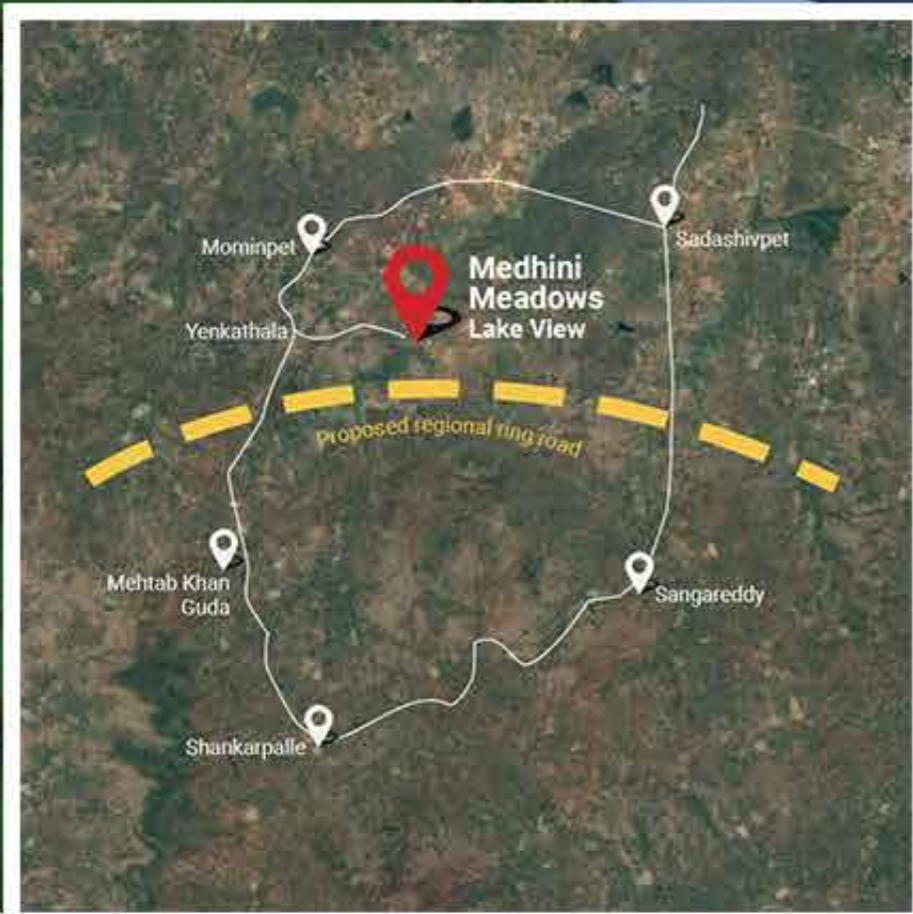
Well-developed villa plots, parks, play areas for weekend/vacation living along with featuring an eco-friendly optional cottage. Has amenities including clubhouse, badminton, volleyball, cricket, and walking tracks.

Project Highlights

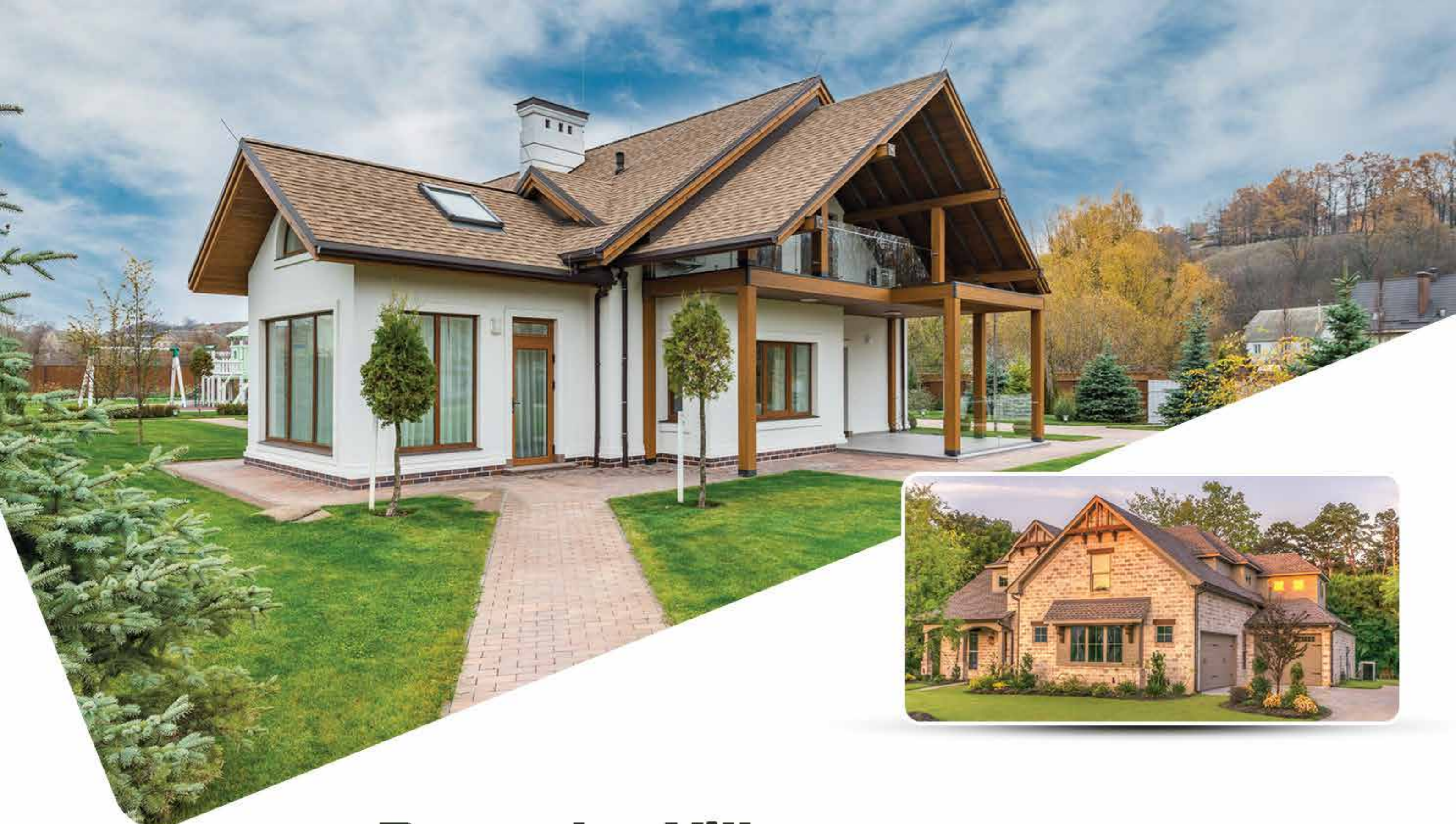
- | | | |
|--------------------------|---|-----------------------------|
| Club House & Cottages | ■ | Gazibo |
| Children Play Area | ■ | Landscape Park & Party Area |
| Cycling & Jogging Track | ■ | 24/7 Security |
| Cctv Camera Surveillance | ■ | Street Lighting |
| Wifi Zone | ■ | Common Water Storage |
| Bt Roads | ■ | Grand Entrance Arch |
| Underground Drainage | ■ | Electricity |
| Avenue Plantation | ■ | Rain Water Harvesting Pits |
| Beach Volleyball Court | ■ | Bespoke Villas |
| 2 Years Free Maintenance | ■ | |
| For Common Amenities | ■ | |



Just 20 Min from Mokila
Sadasipet, or Sangareddy



**Select the plot
you want
online on** www.medhinimeadows.com | **Start living
with legends
near you!**



Bespoke Villas as you wish

www.medhinimeadows.com

208 Sq Yards - 2650 sft
**Villas that suits
your status**

Medhini  Meadows
Lake View
Tekulapalli, Mominpet

Visit us to live with
legends as your
neighbour!

Office Address :
5th Floor, Unit 5/2 G Square Building,
Near Raidurgam police station,
Hyderabad, Telangana - 500081

www.medhinimeadows.com

Disclaimer:

This brochure is purely a conceptual presentation and not a legal offering.
The promoters reserve the right to make changes in elevation, specifications
and plans as deemed fit

Marketed by

 **square select**
www.squareselect.in